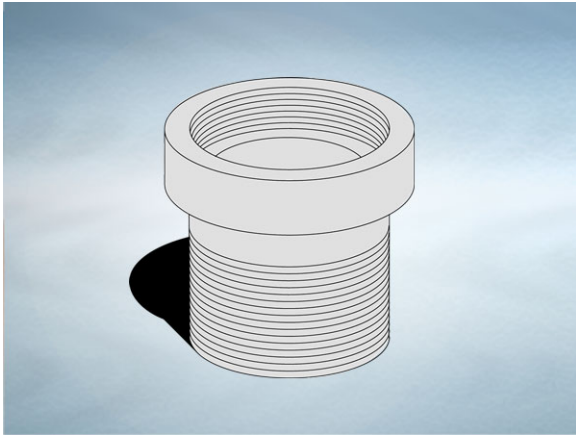


**Product Details**

**U102 Extension**

**Technical Data**



**Dimensions:**

130 dia. overall size

60 - Overall Height

37 to 55 - min/max height increase

**Connection** - 4" NPSM Vari-Level thread

**Materials** - Cast iron, lacquered

**Weight** - 1.1 kg

**General Description:**

Cast Iron Vari-Level Extension, with 4" NPSM dia. vertical outlet. Used to increase the height between the top of a body and finished floor level. Extensions may be stacked to obtain extra height, but access to trap/plug will be restricted when used with G/GC/GD/GP series trapped bodies

**Materials:**

**Cast Iron - BS EN 1561:** Used for bodies, membrane clamping collars, spigot adaptors and accessories such as extensions. A widely used metal in the drainage industry, its resistance to corrosion permits extended use under extreme conditions. Castings are coated with a high grade lacquer paint to provide internal and external surface coverage. Paint will gradually wear off and is replaceable; oxidation (surface rusting) is a natural process which does not weaken the material. A zinc anti-corrosion coating is applied to certain castings by sherardizing.

All dimensions are in millimetres unless stated. In line with general practice all dimensions shown are nominal.

Wade International

Third Avenue, Halstead, Essex, CO9 2SX.

Telephone: +44 (0)1787 475151

Fax: +44 (0)1787 475579

e-mail: [wadetech@alumascwms.co.uk](mailto:wadetech@alumascwms.co.uk)

website: <https://www.alumascwms.co.uk/brands/wade/>

**Typical Installation for U102:**

Note: This illustration may show a similar Wade Product - it is intended to show the general installation type only.

